

The background features abstract, overlapping geometric shapes in various shades of blue, ranging from light sky blue to deep navy blue. These shapes are primarily located on the right side of the slide, creating a modern, dynamic feel.

ONCOLOGY NURSING: A REVIEW FOR CERTIFICATION EXAM AND CLINICAL UPDATE

NOVEMBER 5/6 2022

OCN REVIEW

“This continuing nursing education activity was approved by the Northeast Multistate Division, an accredited approver by the American Nurses Credentialing Center’s Commission on Accreditation”

8.0 contact hours will be awarded to nurses who attend the program in its entirety and complete a program evaluation

DISCLOSURES

No presenters have anything to disclose.

OBJECTIVES

- Overview of OCN Test Blueprint
- Develop your Plan & Gather your Resources
- Multiple Choice Questions - How to break them down and find the best answer
- Day of Test Success

2022 OCN Test blueprint



Oncology Nursing
Certification Corporation

- ▶ The OCN® [Test Content Outline](#) includes six major subject areas, each with a percentage assigned to it. Many nurses who have passed the test tell us the Test Content Outline was essential in helping them know what areas to study. Remember, only generic drug names are used on ONCC tests.

2022 OCN® Test Content Outline

- I. **Care Continuum - 19%**
- II. **Oncology Nursing Practice - 17%**
- III. **Treatment Modalities - 19%**
- IV. **Symptom Management and Palliative Care - 21%**
- V. **Oncologic Emergencies – 12%**
- VI. **Psychosocial Dimensions of Care - 12%**

Develop your plan & Gather your resources



- Resources for success
 - Prep Courses
 - Study Guides
 - Practice Tests
- Don't cram and don't push off the exam
- Test is 3-hours & 165 multiple-choice questions
- Consider successful studying methods for you
- Schedule study times (on own or with partner)
- Start studying 3-6 months before you plan to test
- Review Test Content Outline to determine areas where you need to focus

MULTIPLE CHOICE QUESTIONS

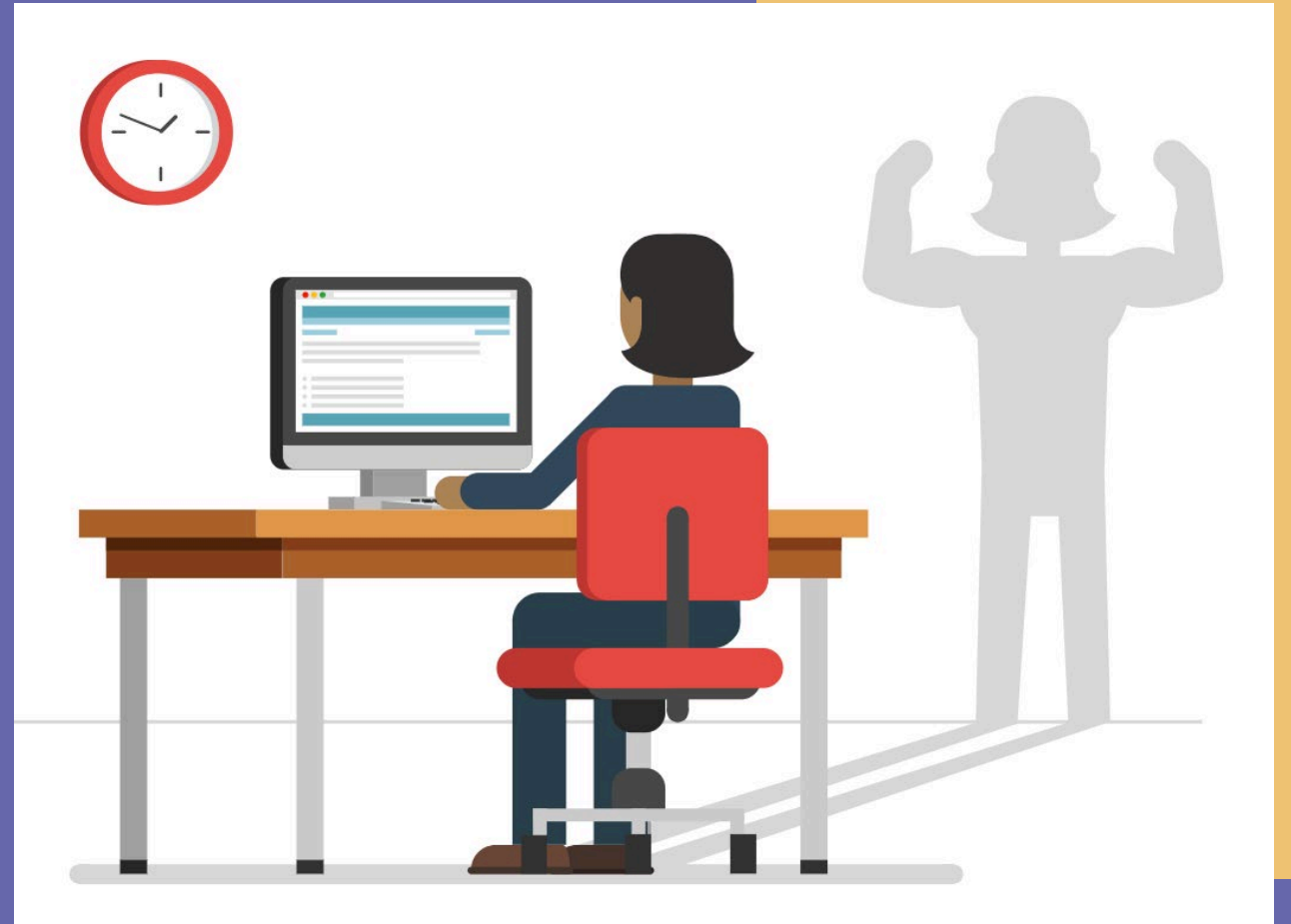
- Read question slowly and completely
- Before reading choices, think of what might the answer be
- Eliminate incorrect options

- The look for:
 - Correct Answer
 - Distractors



DAY OF TEST SUCCESS

- Eat properly
- Get to bed early
- Take some time for self (no cramming)
- Review location of test & what to bring
- Don't second guess
- Trust in your knowledge
- Celebrate!



2022 OCN TEST CONTENT OUTLINE CHANGES FROM 2018

Care continuum from 18% to 19% of the test

Survivorship: addition of employment & insurance concerns

Oncology Nursing Practice

Scientific Basis: Addition of Molecular testing & genetics

Combination scope, standards, and related issues & standards of professional performance to
Scope and Standards of Practice (no change in content of these sections otherwise)

Symptom Management & Palliative Care from 23% to 21% of the test

Pain Management added

Oncologic Emergencies from 10% to 12% of test

Added Immune-related adverse events & Venous Thromboembolism

Psychosocial Dimensions of Care from 10% to 12% of test

Financial Concerns: Added employment, insurance, and resources

Psychosocial considerations: Added spiritual distress, caregiver fatigue, and crisis management
(domestic violence, suicidal ideation)

Sexuality: Added considerations for sexual & gender minorities

BREAKING DOWN THE QUESTION

What matters most?

What risks factors are present?

Which problem should be addressed first?

What will happen if I do nothing?

Is more information needed?

What would the impact of this intervention be?

ONS COURSES

[HTTPS://WWW.ONS.ORG/COURSES/INTRODUCTION-EVIDENCE-BASED-PRACTICE](https://www.ons.org/courses/introduction-evidence-based-practice)

[HTTPS://WWW.ONS.ORG/COURSES/ADVANCED-AND-METASTATIC-UROTHELIAL-CANCER-CARE-COORDINATION-WEBINAR](https://www.ons.org/courses/advanced-and-metastatic-urothelial-cancer-care-coordination-webinar)

[HTTPS://WWW.ONS.ORG/COURSES/ADVANCED-AND-METASTATIC-UROTHELIAL-CANCER-ADVANCED-TREATMENT-OPTIONS-CASE-STUDY](https://www.ons.org/courses/advanced-and-metastatic-urothelial-cancer-advanced-treatment-options-case-study)

[HTTPS://WWW.ONS.ORG/COURSES/IMMUNO-ONCOLOGY-ONCOLOGY-NURSE-CASE-STUDIES](https://www.ons.org/courses/immuno-oncology-oncology-nurse-case-studies)

[HTTPS://WWW.ONS.ORG/COURSES/NUTRITION-CASE-STUDY-PATIENT-RECEIVING-STEM-CELL-TRANSPLANTATION](https://www.ons.org/courses/nutrition-case-study-patient-receiving-stem-cell-transplantation)

[HTTPS://WWW.ONS.ORG/COURSES/NUTRITION-CASE-STUDY-PATIENT-CANCER-HEAD-AND-NECK](https://www.ons.org/courses/nutrition-case-study-patient-cancer-head-and-neck)

[HTTPS://WWW.ONS.ORG/COURSES/QUALITY-AND-PHYSICAL-ACTIVITY-COURSE-BUNDLE](https://www.ons.org/courses/quality-and-physical-activity-course-bundle) (FREE TO MEMBERS)

ONCOLOGY NURSING PODCASTS EPISODES

Listen on iTunes: <https://itunes.apple.com/us/podcast/the-oncology-nursing-podcast/id1298224806?mt=2>

Listen on Google Play:

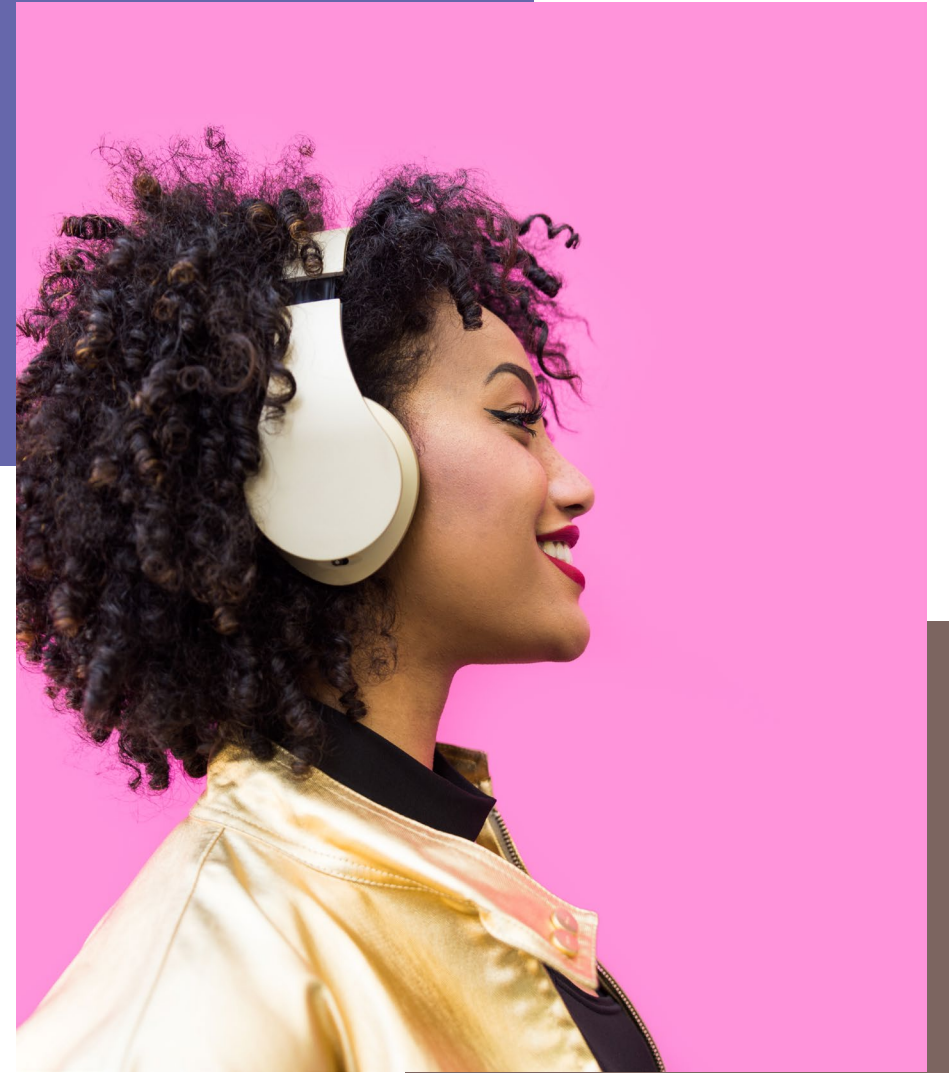
[https://play.google.com/music/listen?t=The Oncology Nursing Podcast&u=0&view=/ps/lqquy3kdtog2ju76jdv3r4m7jni](https://play.google.com/music/listen?t=The_Oncology_Nursing_Podcast&u=0&view=/ps/lqquy3kdtog2ju76jdv3r4m7jni)

Listen on Stitcher:

<https://www.stitcher.com/podcast/oncology-nursing-podcast/the-oncology-nursing-podcast>

Listen on Spotify:

https://open.spotify.com/show/3Q58Ulo86qXLKJUJgwQruu?si=jN7IK1OUT-6WxILTK3j_UA



PODCASTS

(EXAMPLES OF EPISODES)



- Episode 196: Oncologic Emergencies 101: Bleeding and Thrombosis
- Episode 195: Exercise's Effect on Patient and Provider Well-Being
- Episode 193: How Social Determinants of Health Affect Cardio-Oncology Survivorship
- Episode 192: Oncologic Emergencies 101: Hypercalcemia of Malignancy
- Episode 191: Explore Orientation Opportunities for New-to-Practice Nurses
- Episode 190: The Environment, Cancer, and Nurses' Role in Advocating for Climate Change
- Episode 188: Oncology Nurse Entrepreneurs Are Innovating Beyond the Bedside
- Episode 187: The Critical Need for Well-Being and Resiliency and How to Practice