



BOSTON
CHAPTER

Welcome back to Day 2: OCN Review & Clinical Updates

SUNDAY AGENDA

| Start | End | Duration | Topic | Presenter |
|----------|----------|----------|--|--|
| 8:00 AM | 8:55 AM | 0:55 | Oncology Nursing Practice + Care Across the Continuum + Survivorship, Psychosocial & Advance Care Planning | Kim Noonan, DNP, ANP |
| 8:55 AM | 10:00 AM | 1:05 | Oncology Nursing Practice + Cancer Pain Management + End of Life Care | Christina Kim, AGPCNP-BC |
| | | | 15 MINUTE BREAK | |
| 10:15 AM | 11:15 AM | 1:00 | Professional Scope and Standards | Nellee Fine, BSN, MA, RN, AOCN |
| 11:15 AM | 12:15 PM | 1:00 | Treatment Modalities: + Immunotherapy: Melanoma Case Study | Michelle Ranaghan, MSN, RN, CRNI, OCN |
| 12:15 PM | 12:30 PM | | Test Hints, Resources and Evaluation | Michelle Ranaghan, MSN, RN, CRNI, OCN |

*Please note: Times are in Eastern Standard Time (EST)

MULTIPLE CHOICE QUESTIONS

- Read question slowly and completely
- Before reading choices, think of what might the answer be
- Eliminate incorrect options
- The look for:
 - Correct Answer
 - Distractors



BREAKING DOWN THE QUESTION

What matters most?

What risks factors are present?

Which problem should be addressed first?

What will happen if I do nothing?

Is more information needed?

What would the impact of this intervention be?

Breaking Down The Question

A patient with breast cancer completed radiation therapy one month ago, and is reporting gradual, moderate dyspnea with a nonproductive cough. A chest x-ray reveals patchy consolidation, most likely representing which of the following?

Working Through the Answers

A patient with breast cancer completed radiation therapy one month ago, and is reporting gradual, moderate dyspnea with a nonproductive cough. A chest x-ray reveals patchy consolidation, most likely representing which of the following?

- ~~A. Pericarditis~~
- ~~B. Secondary Malignancy~~
- C. Pneumonitis
- ~~D. Rib fracture~~

Practice Question #1

Which one of the following medications is used to prevent sinusoidal obstruction syndrome (SOS)?

- A. Ursodiol
- B. ~~Lovenox~~
- C. ~~Pantoprazole~~
- D. ~~Bactrim DS~~

Practice Question #2

Which of the following is prescribed for a patient diagnosed with surgically unresectable renal cell carcinoma that has metastasized to the liver?

- ~~A. Cetuximab~~
- ~~B. Fluorouracil~~
- ~~C. Nilotinib~~
- D. Temsirolimus

Practice Question #3

A patient with a life expectancy of five months is worried about using the Medicare Hospice Benefit because of increasing financial concerns. The nurse knows that the benefit includes providing:

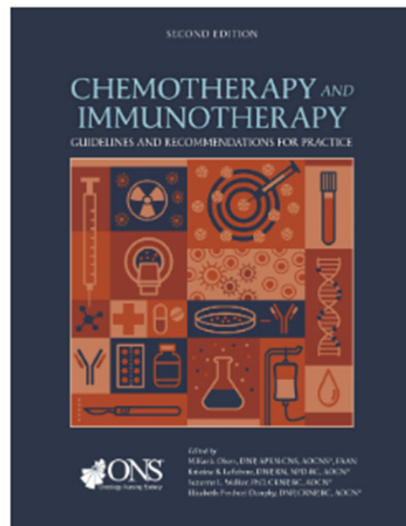
- A. ~~admission in a clinical trial.~~
- B. durable medical equipment.
- C. ~~transportation for radiation treatments.~~
- D. ~~respite care lasting more than seven days~~

[Hospice Care Coverage \(medicare.gov\)](https://www.medicare.gov/hospice-care-coverage)

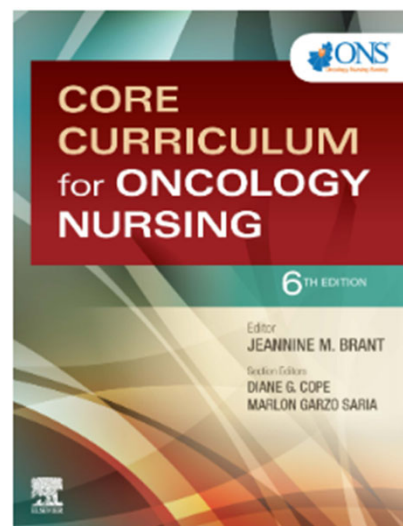
Practice Question #4

Which of the following is considered a risk factor for developing a hypersensitivity reaction?

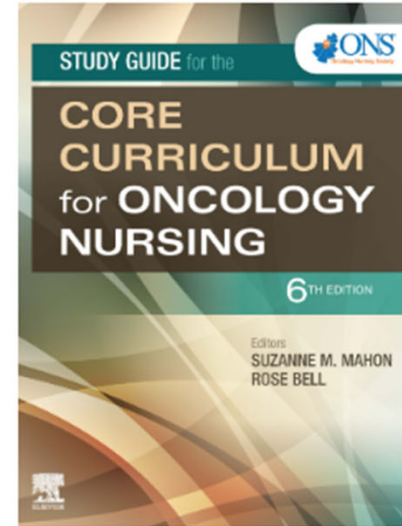
- ~~A. Male gender~~
- ~~B. No known medication allergies~~
- ~~C. First exposure to a medication~~
- D. Intravenous route



[Chemotherapy and Immunotherapy Guidelines and Recommendations for Practice \(Second Edition\) | ONS](#)



[Core Curriculum for Oncology Nursing \(Sixth Edition\) | ONS](#)



[Study Guide for the Core Curriculum for Oncology Nursing \(Sixth Edition\) | ONS](#)

✓ **Thorough Explanations**

Become a better doctor with answer explanations that enable you to master the material.

✓ **Do better on your exams with answers.**

Questions and teaching points are continuously updated.

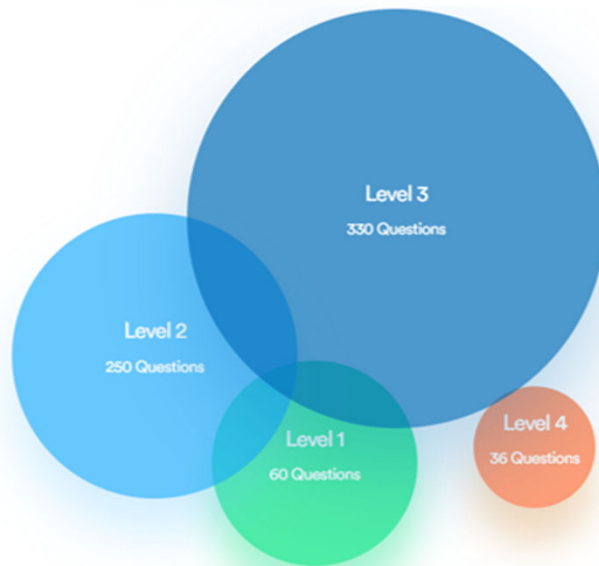
✓ **Test Exams & Unlimited Quizzes**

Assess where your strong and generate practices questions where you're weak.

✓ **Performance Reports**

Actionable intelligence on where to improve.

Our question bank for the Oncology Nurse Certification Exam covers four Cognitive Difficulty Levels:



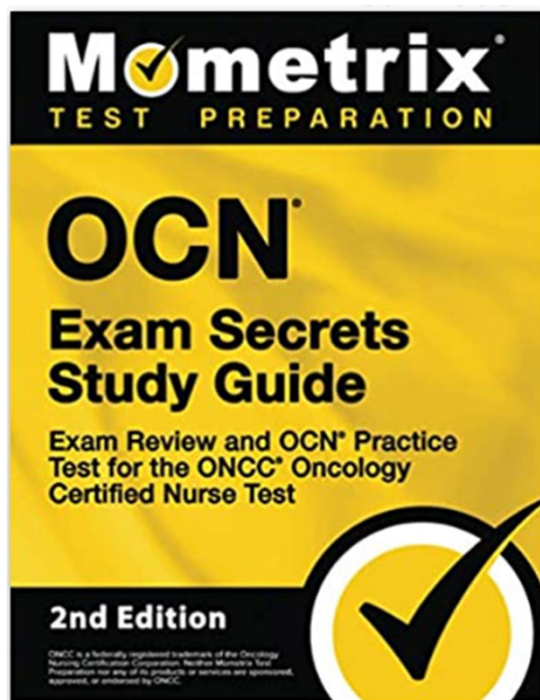
Ace The Oncology Nurse Certification Exam

Be prepared for the Oncology Nursing Certification Corporation® with 677 Questions that our experts have selected to simulate the real exam.

100% Money Back Guarantee

Feedback from thousands of users proves our Q-Bank will help you excel on your exam. Use the Q-Banks and if you don't pass, we will refund 100% of your fee. What do you have to lose?

[Nurse-Oncology \(OCN\) \(statpearls.com\)](https://statpearls.com)



- ✓ Includes Practice Test Questions
- ✓ Fast Free Shipping
- ✓ Instant eBook Access Available

**You can't lose with our 100%,
ironclad, moneyback guarantee**

Order *Secrets of the ONCC Certification Exams* entirely at our risk. When you order from this site, it comes with a risk-free, 1-year 100% money-back guarantee. There's NO RISK on your part.

If you don't like this comprehensive book for ANY reason, you can return it for a 100% refund of the product price. You're free to return it at any time, for any reason, up to one year after the purchase date, no hassle, no questions asked.

Don't decide now if the product is for you. Just get it and try it out. If it doesn't do everything we say and more, if you don't save time, money, and frustration, if it isn't what you thought it was, if it doesn't work for you, you have nothing to worry about when you order from this site because you can get every dime of your money back under the no-loopholes guarantee. There's nothing to lose and everything to gain.

[Study Guide & Practice Test for ONCC Exams \[Prepare for the ONCC Test\]
\(mometrix.com\)](https://mometrix.com)

ONS COURSES

[HTTPS://WWW.ONS.ORG/COURSES/INTRODUCTION-EVIDENCE-BASED-PRACTICE](https://www.ons.org/courses/introduction-evidence-based-practice)

[HTTPS://WWW.ONS.ORG/COURSES/ADVANCED-AND-METASTATIC-UROTHELIAL-CANCER-CARE-COORDINATION-WEBINAR](https://www.ons.org/courses/advanced-and-metastatic-urothelial-cancer-care-coordination-webinar)

[HTTPS://WWW.ONS.ORG/COURSES/ADVANCED-AND-METASTATIC-UROTHELIAL-CANCER-ADVANCED-TREATMENT-OPTIONS-CASE-STUDY](https://www.ons.org/courses/advanced-and-metastatic-urothelial-cancer-advanced-treatment-options-case-study)

[HTTPS://WWW.ONS.ORG/COURSES/IMMUNO-ONCOLOGY-ONCOLOGY-NURSE-CASE-STUDIES](https://www.ons.org/courses/immuno-oncology-oncology-nurse-case-studies)

[HTTPS://WWW.ONS.ORG/COURSES/NUTRITION-CASE-STUDY-PATIENT-RECEIVING-STEM-CELL-TRANSPLANTATION](https://www.ons.org/courses/nutrition-case-study-patient-receiving-stem-cell-transplantation)

[HTTPS://WWW.ONS.ORG/COURSES/NUTRITION-CASE-STUDY-PATIENT-CANCER-HEAD-AND-NECK](https://www.ons.org/courses/nutrition-case-study-patient-cancer-head-and-neck)

[HTTPS://WWW.ONS.ORG/COURSES/QUALITY-AND-PHYSICAL-ACTIVITY-COURSE-BUNDLE](https://www.ons.org/courses/quality-and-physical-activity-course-bundle) (FREE TO MEMBERS)

ONCOLOGY NURSING PODCASTS EPISODES

Listen on iTunes: <https://itunes.apple.com/us/podcast/the-oncology-nursing-podcast/id1298224806?mt=2>

Listen on Google Play:

[https://play.google.com/music/listen?t=The Oncology Nursing Podcast&u=0&view=/ps/lqquy3kdtog2ju76jdv3r4m7jni](https://play.google.com/music/listen?t=The_Oncology_Nursing_Podcast&u=0&view=/ps/lqquy3kdtog2ju76jdv3r4m7jni)

Listen on Stitcher:

<https://www.stitcher.com/podcast/oncology-nursing-podcast/the-oncology-nursing-podcast>

Listen on Spotify:

https://open.spotify.com/show/3Q58Ulo86qXLKJUJgwQruu?si=jN7IK1OUT-6WxILTK3j_UA



PODCASTS

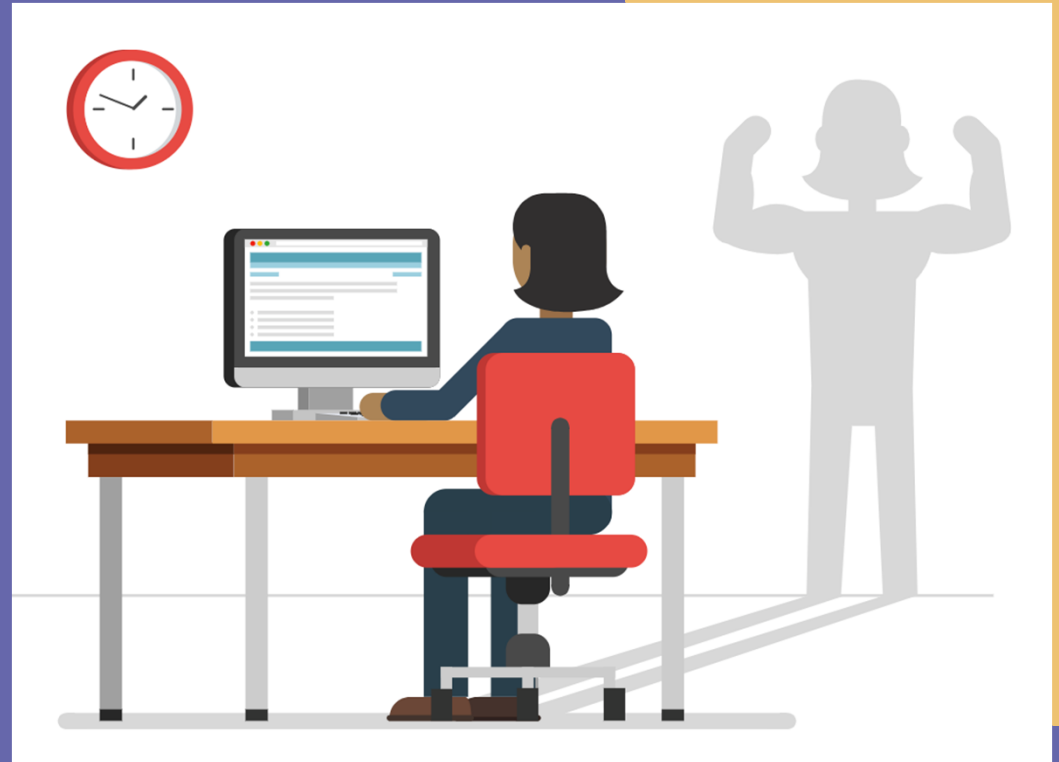
(EXAMPLES OF EPISODES)



- Episode 196: Oncologic Emergencies 101: Bleeding and Thrombosis
- Episode 195: Exercise's Effect on Patient and Provider Well-Being
- Episode 193: How Social Determinants of Health Affect Cardio-Oncology Survivorship
- Episode 192: Oncologic Emergencies 101: Hypercalcemia of Malignancy
- Episode 191: Explore Orientation Opportunities for New-to-Practice Nurses
- Episode 190: The Environment, Cancer, and Nurses' Role in Advocating for Climate Change
- Episode 188: Oncology Nurse Entrepreneurs Are Innovating Beyond the Bedside
- Episode 187: The Critical Need for Well-Being and Resiliency and How to Practice

DAY OF TEST SUCCESS

- Eat properly
- Get to bed early
- Take some time for self (no cramming)
- Review location of test & what to bring
- Don't second guess
- Trust in your knowledge
- Celebrate!





BOSTON
CHAPTER

Thank you for joining us for the OCN Review and Clinical Updates

Please follow the QR code OR link on the BONS OCN review website to complete the post-evaluation for continuing education credits.



**SCAN ME with your smart
phone camera app**

Thank you for joining us!

To receive your continuing education for participating please complete the following post evaluation. Click the button below.

Day 1 Post Evaluation

Day 2 Post Evaluation